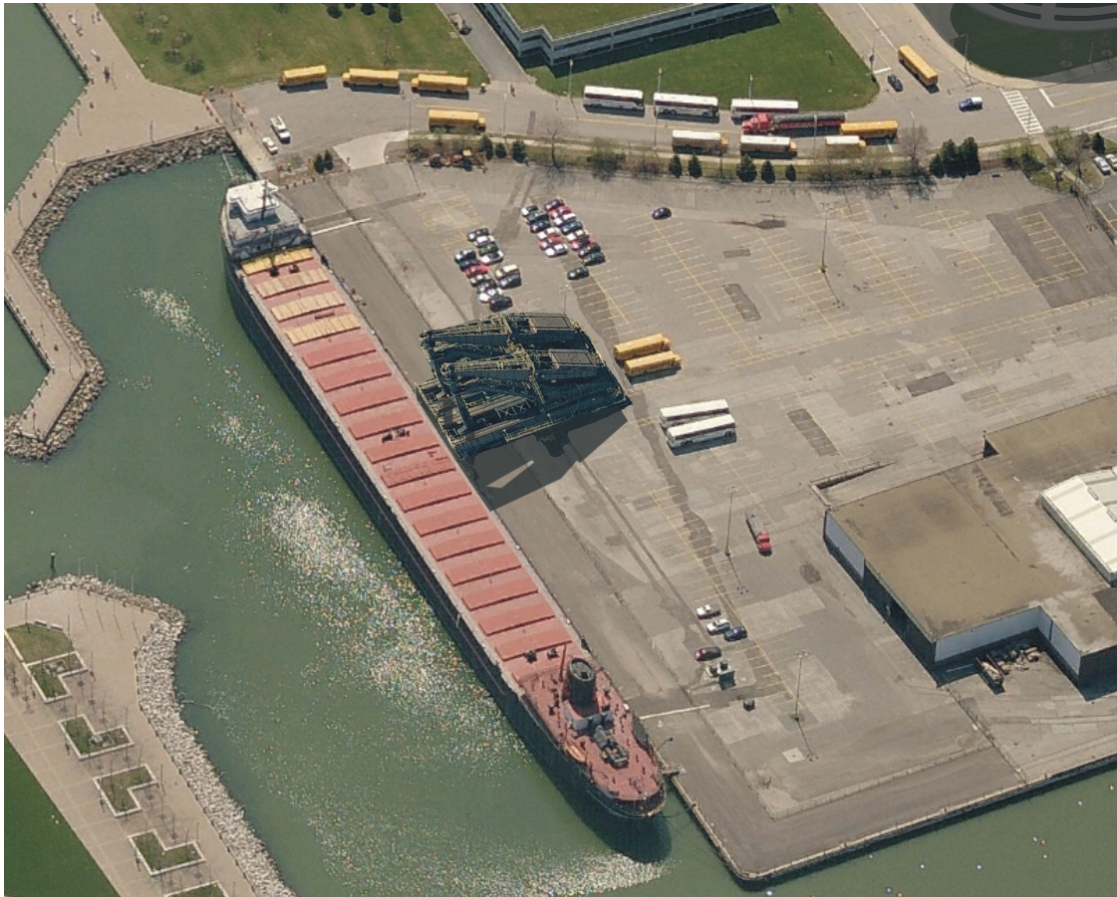


They were partners in commerce for fifty years...



The Hulett Ore Unloaders and the Steamer William G. Mather belong together.

- **Invented by a Clevelander:** George Hulett,
 - **Built in Cleveland** by Wellman-Seaver-Morgan Co,
 - **Used in Cleveland** by our many steel mills,
- The **Hulett Ore Unloaders** ushered in an era of prosperity for the Industrial North. This picture shows how they would look erected next to a partner ship, the William G. Mather. They would become “Cleveland’s Eiffel Tower”— a signature Cleveland icon recognizable around the world. As we look to the future, it is important to respect the achievements of our past. We stand “...astride the shoulders of giants.

We master their wisdom and move beyond it.”
(*Isaiah di Trani*) George Hulett was a giant of an inventor, and an inventor of giants. **Let us see to it that future generations have the opportunity to appreciate and be inspired by our legacy, by erecting the Hulett Ore Unloaders next to the steamship William G. Mather.**

NOTE: Interference with air traffic is not an issue. **The FAA gave us a determination of “no hazard” to navigation.** (Aeronautical Study No. 2008-AGL-3545-OE)

Friends of the Hulett Ore Unloaders and Steamer William G. Mather — a Committee of Citizens’ Vision

P.O. Box 32700 Cleveland, OH 44132-0700

www.citizensvision.org

216-378-0535

440-835-1720

Fax: 440-835-9441

info@citizensvision.org