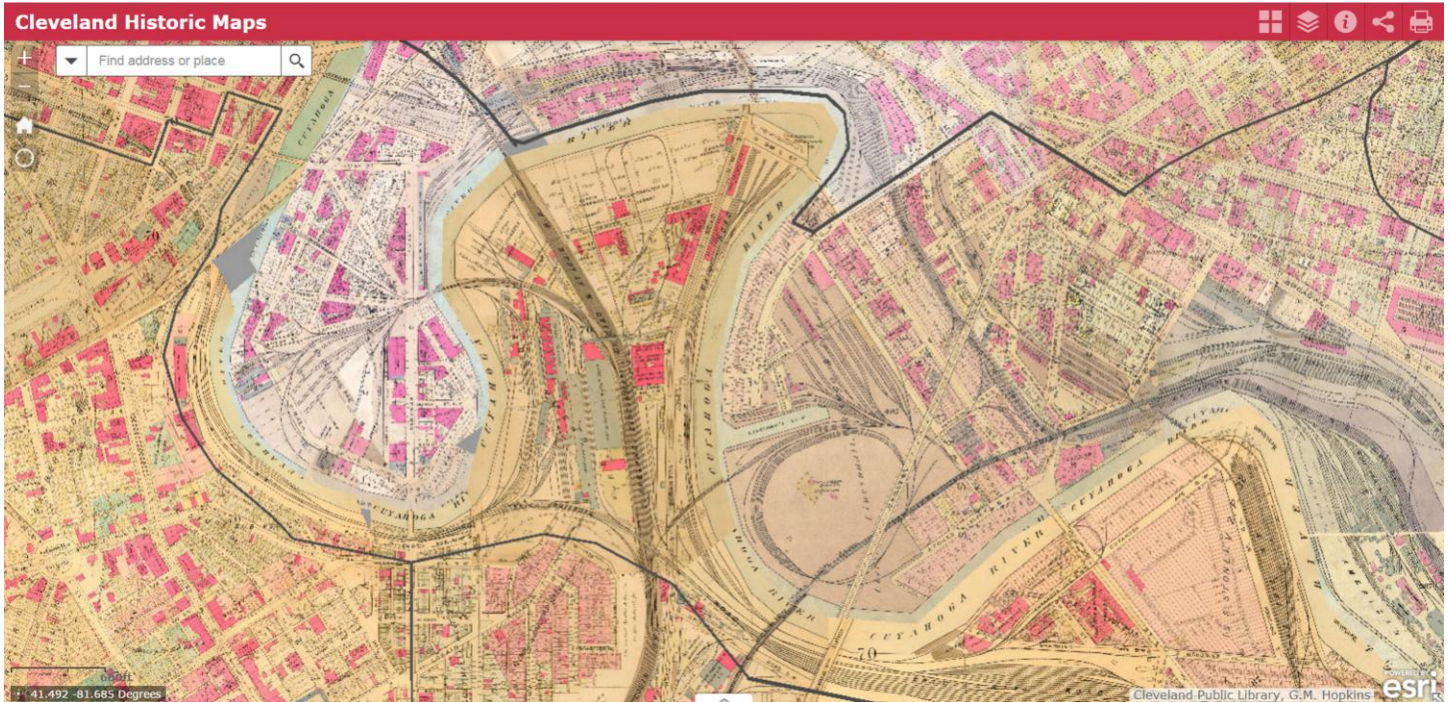
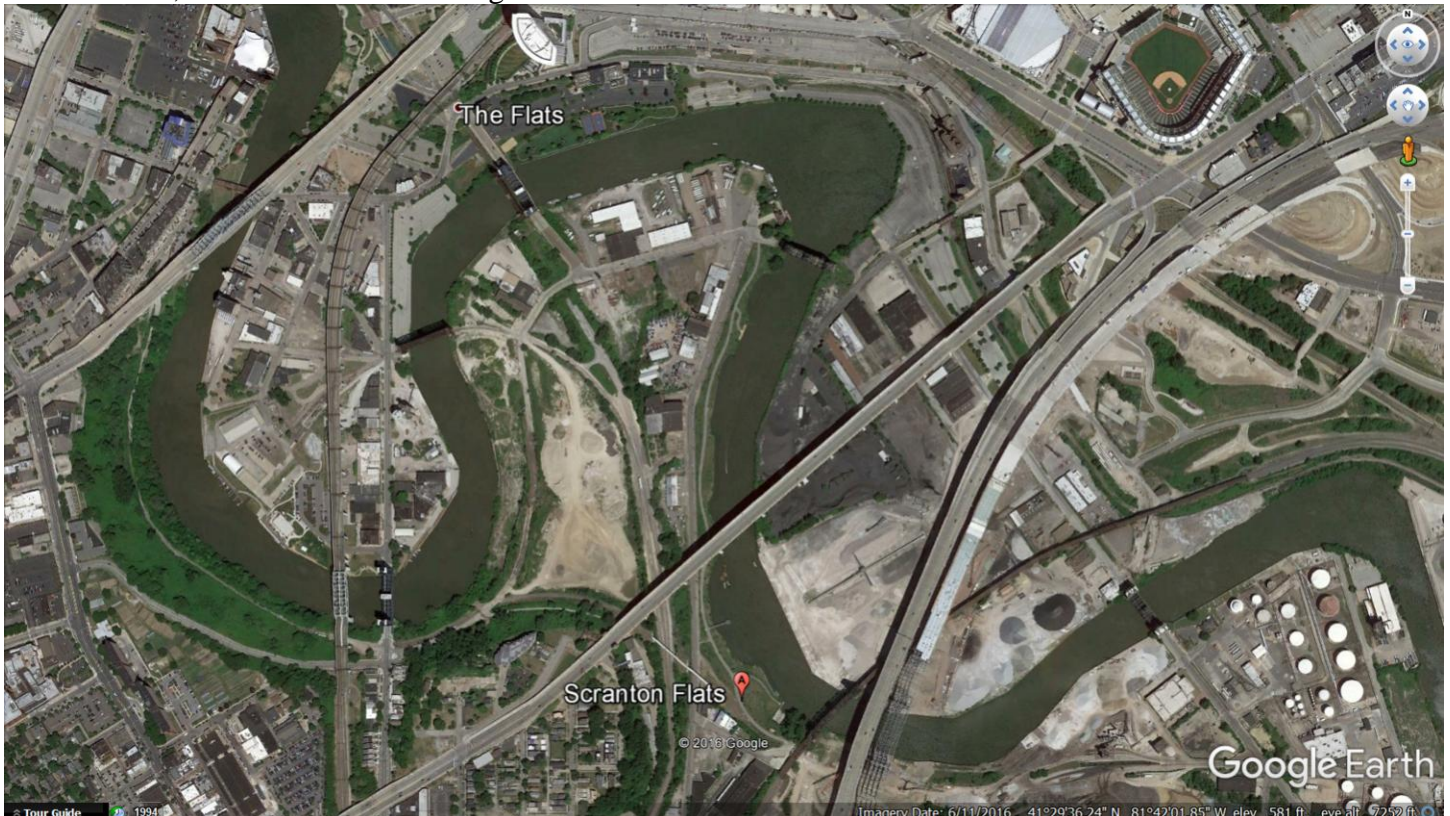


Two Hulett Ore Unloaders, Steamship William G. Mather Museum, COD Submarine plus other venues placement on Scranton Peninsula, Cleveland Ohio – Cutting channel at base of Scranton peninsula

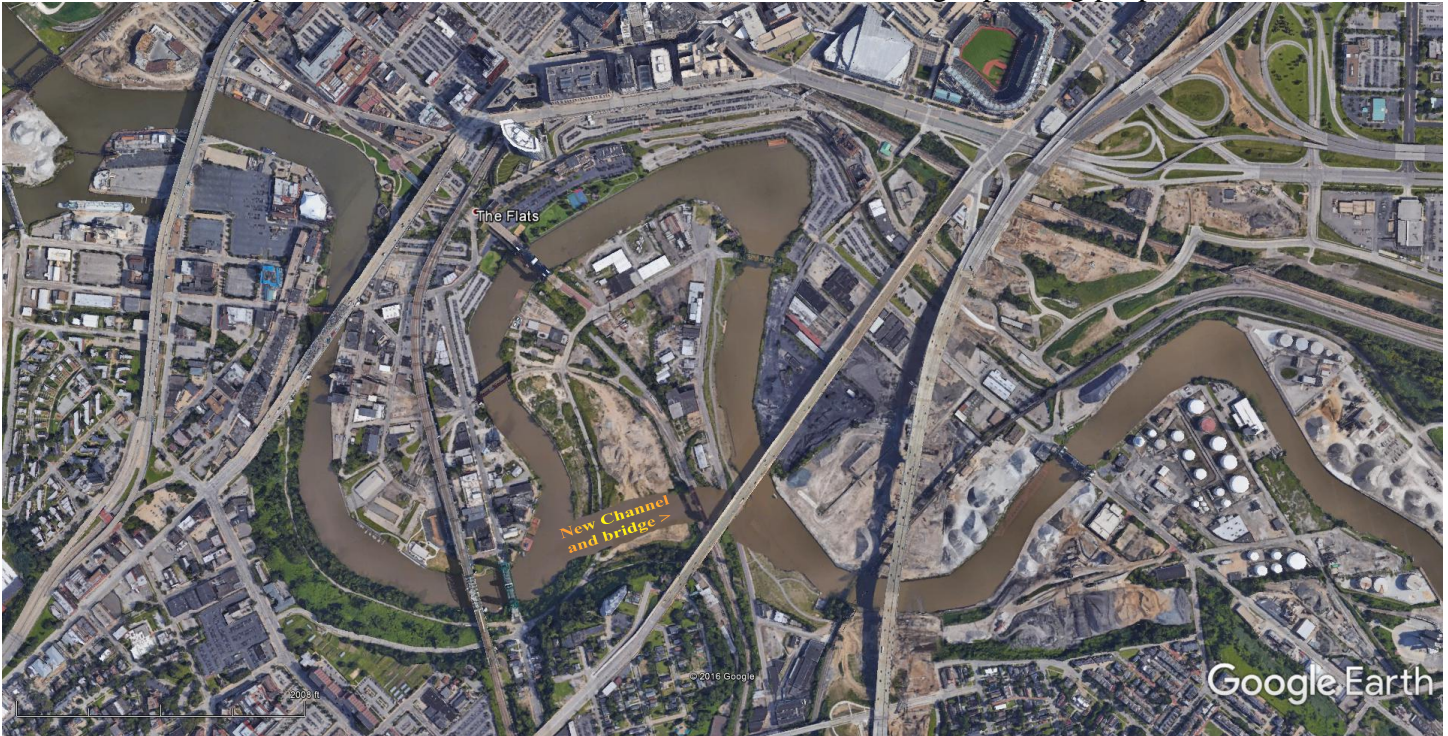
Then – Scranton Peninsula, Cleveland Ohio – circa ~ 1920



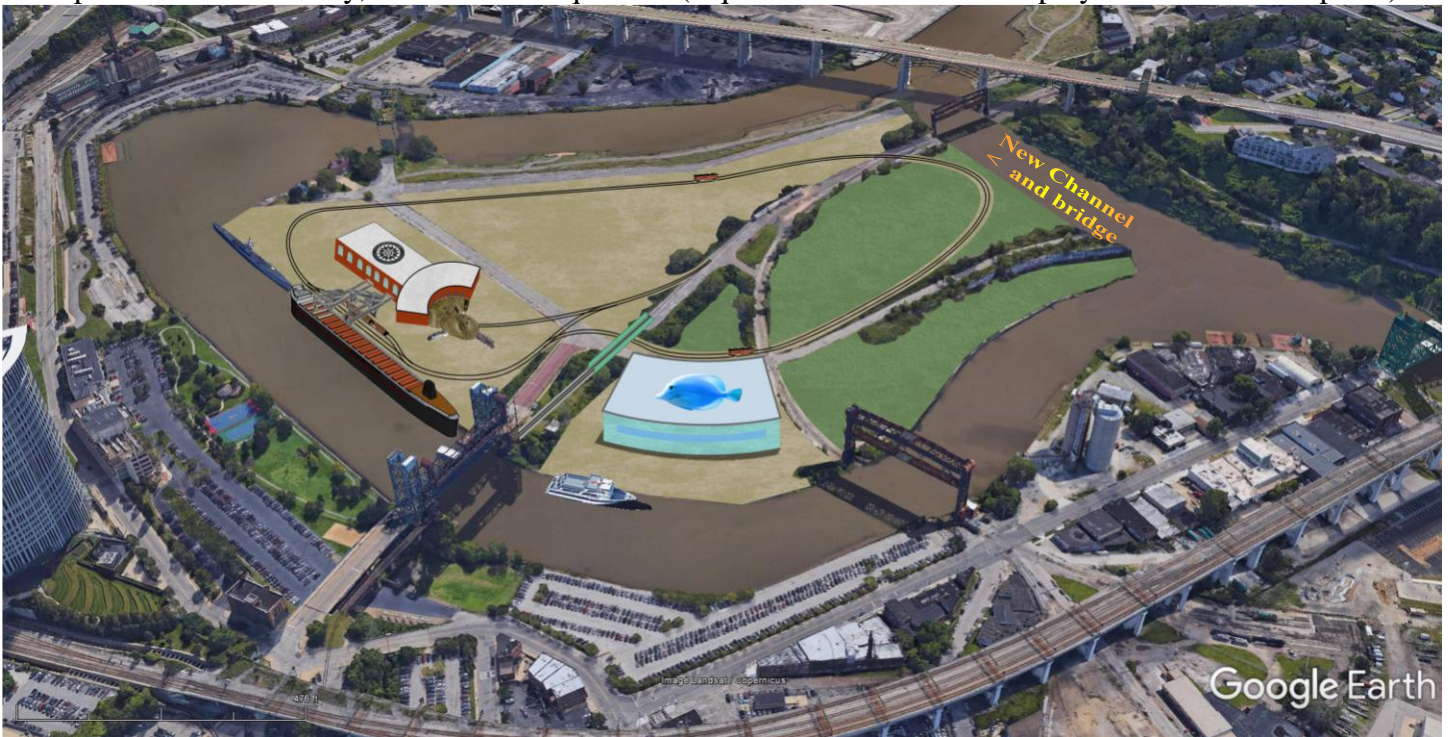
Now June 11, 2016 Google Earth Image



Citizens Vision Proposed Channel with new Scranton Road/railroad bridge spanning proposed channel



Citizens Vision proposed location for 2 Hulett's, Steamship William G. Mather, COD Submarine, Museum of Transportation and Industry, World Class Aquarium (Aquarium or all - ownership by Cleveland Metroparks)



Citizens Vision Win-Win.....Win-Win Proposal

Scranton Peninsula Redevelopment with new navigation channel in Cuyahoga River

- (1) Cutting of new channel across base of Scranton Peninsula
 - (a) Eliminates approximately one mile of dredging
 - (b) More direct river creates faster flow, diminishes deposits to be dredged up river and down river
 - (c) Wider Scranton direct channel facilitates dual direction travel by at least two ships at a time
 - (d) Eliminates for ships at least one hour each way travel time than by way of collision bend
 - (e) Allows more ship traffic to enter river without unnecessary extra hold time
 - (f) Benefits ArcelorMittal and other industries and businesses on the Cuyahoga River
 - (g) Incentive for other businesses to locate on the river's edge
- (2) Channel creates a mile of river for waterfront housing and recreational use
 - (a) Marinas complemented with high value condominiums on both sides of river
 - (b) Boardwalks on both sides of river
 - (c) Aquatic activities: once very popular parades of boats, river fests (crazy craft races)
 - (d) Rowing clubs: hosting predictable/uninterruptable regional, national and international events
- (3) Irishtown Bend reinforcement/stabilization project and redevelopment.
 - (a) Big savings - possibly 500,000 cubic yards channel excavation material in the immediate area
 - (b) Opportunity for a mile long descending pedestrian/bike path with overlooks and direct staircases
- (4) New road/railroad bridge across the new channel
 - (a) Can be explored if actually needed or desired, railroad and/or road
 - (b) Columbus Road bridge to Carter Road bridge could serve purpose depending on road traffic study
 - (c) Eagle Avenue bridge could be reactivated
 - (d) If required can be built while channel is being dug
- (5) Proposed venue locations have easy access from and to downtown Cleveland
 - (a) Walking distance from rapid transit system
 - (b) Ability to connect trolley line from Terminal Tower Rapid Transit to Scranton Peninsula venues
 - (c) Substantial space for parking
- (6) Two Huletts preserved in Cleveland in permanent location near Carter Road bridge
- (7) Steamship William G. Mather Museum preserved in Cleveland in permanent location
 - (a) Places it alongside of two Huletts, presenting over half century commercial relationship
 - (b) Allows Cleveland lakefront developer to proceed with project without obstructed views of lake
- (8) USS COD Submarine preserved in Cleveland in permanent location
 - (a) Places it by new proposed American Museum of Transportation and Industry
 - (b) Allows for expansion of dedicated covered exhibit space for its story and related artifacts
 - (c) Allows Cleveland lakefront developer to proceed with project by its current berth
- (9) Goodtime III and maybe Goodtime IV tour boats, mooring located on either side of the river
 - (a) Walking access from public transportation in downtown and Terminal Tower
 - (b) Boarding from ample parking available nearby
- (10) Water taxi service
 - (a) In area around the Scranton Island, both sides of river stops
 - (b) Connecting this area of river to areas near Nautica complex downriver, both sides of river stops
- (11) Proposed American Museum of Transportation and Industry
 - (a) Incorporates/expands on principles of proposed Crawford Museum of Transportation and Industry
 - (b) Incorporates permanent railroad museum including roundhouses and turntable
 - (c) Incorporates terminus for Cuyahoga Valley Railroad
 - (d) Incorporates bus trolley from Terminal Tower plus extension to Metroparks Zoo
- (12) Proposed world class Aquarium under ownership and management by Metroparks
 - (a) Incorporates complementary venue with Zoo
 - (b) Incorporates bus trolley from Scranton "Island" to Zoo
- (13) Expansion of Rock and Roll Hall of Fame and Museum
 - (a) Relinquish building and garage occupied Great Lakes Science Center
 - (b) Allows for additional expansion and connectivity underground between both buildings
- (14) Merger Great Lakes Science Center with American Museum of Transportation and Industry
 - (a) Combines complimentary venues, expands visitor experience at one location
 - (b) Creates environment for education in skilled trades, possible vocational school location
- (15) Port Authority acquire underutilized property along the river as the channel is opened up
 - (a) Create industrial parks
 - (b) Create Trade/Tax Free Zones
 - (c) Move certain appropriate operations of Port away from Lakefront to new River locations